

HANABI-PIV

Metaphase Auto-Spreader



ADS Biotec offers the most advanced and state-of-the-art technology in cytogenetics automation. The HANABI-PIV Metaphase Auto-Spreader is an automated instrument that provides optimized environmental conditions for the preparation of metaphase chromosome spreads. The HANABI-PIV automatically processes up to 48 samples or 96 slides per run.

Temperature, humidity and airflow are set and rapidly stabilize thus ensuring that when chromosomes are dropped and spread on microscope slides, they are dried in a consistent and reproducible manner. Excessive spreading and chromosome overlaps are minimized, facilitating better yields of metaphase analysis. The sample tubes and the slides are tracked by bar codes. Crossing of the chromosomes is minimal, and after automated spreading the chromosomes can be analyzed on the completed slide.

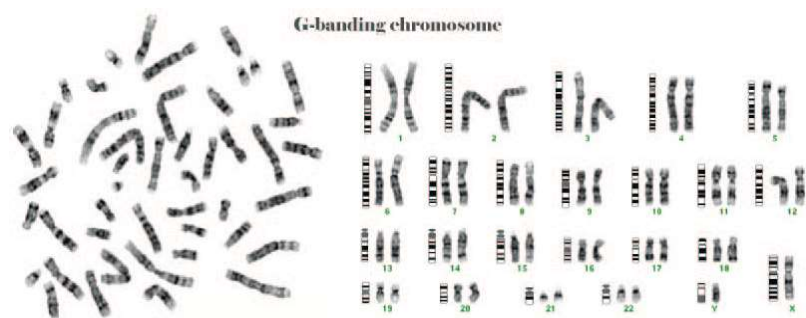
The chromosome spreading process for conventional FISH, CGH and G-banding analysis of samples derived from blood cells or bone marrow samples is now more streamlined and can easily be carried out regardless of skill level.

Protocols requiring that cells and chromosomes are spread on the entire slide can be achieved using an optional tilted slide block.



Features and Benefits

- Increased laboratory productivity
- Highly consistent spreading results
- Sample integrity is maintained in the temperature controlled environment
- 48 samples/96 slides walk-away capability
- Touch screen control panel
- Low maintenance and ease of use



Increased Productivity with High Quality and Consistency

HANABI-PIV

Metaphase Auto-Spreader



Specifications

Items	Specifications	Remarks
Number of Samples	48 samples	Uses bar code reader
Number of Slides	96 slides	Uses bar code reader
Size of Sample Tube	15 mL conical tube	D=17mm, PP, PS
Slide Glass	76 x 26 (t+0.8-1.2) mm	76 x 26, 75 x 25
Dispenser Tip	Gilson D200	Uses 200 µL tip
Sample Volume	1 mL	Min: 0.2 mL, Effective amount: 1.0 mL
Dropped Volume of Sample	5 – 50 µL/spot	2 spots mode: 5 – 30 µL /spot
Dropped Volume of Fixative	5 – 50 µL/spot	2 spots mode: 5 – 30 µL /spot
Number of Spot(s) per slide	1 – 2	
Additional Fixative Dropping Time	30 – 90 sec	Using Fixative-adding mode
Processing Time	3.0 hrs (approx.)	48 samples, 96 slides
Protocol Selection	6	A, B, C, D, E, F
Tilting Base	5/10 degrees	Using Tilting mode
Dry-Index Settings	6 – 12	HANABI dry-index allows drying optimization
Bar Code Reader	20 digits (max)	V400-R (OMRON), QR, DataMatrix, RSS, Barcode
Operating Environment	15 – 25°C, 20 – 60% relative humidity	Non-condensing, non freezing
Storage Environment	0 – 40°C, 9 –95% relative humidity	Non-condensing, non-icing
Atmospheric Pressure	800 – 114 hPa	2,000 meter or lower
Power Input Voltage	100, 120, 230VAC, (+/- 10%)	50/60 Hz
Overvoltage Category	2	
External Size mm (W x H x D)	1060 x 1680 x 710	Without door knob and switches
Weight	350 Kg (approx.)	
Safety Standard	CE marked	EN61010-1
EMC	EN61000-4, EN61326	Includes fume hood with charcoal filter (EU version)

Ordering Information

Product Description	Catalog Number
HANABI-PIV Metaphase Spreader	HCMS-99-0004-A

Contact Information



ADS Biotec, Inc.
7409 Irvington Road,
Omaha, NE 68122 USA

Phone: 402-800-3200
Fax: 402-800-3183
Email: info@adsbiotec.com
Web: www.adsbiotec.com

Increased Productivity with High Quality and Consistency